



# AgroHattan

## Contact Us

**P:** +905397733906  
**P:** +90 332 350 01 46

**E:** sales@agrohattan.com

**W:** www.agrohattan.com

Tatlıcak mah, uluyatır SK NO : 27C .Karatay/Konya



# OUR COMPANY IS A DEDICATED BRAND

# COMPANY PROFILE

*.agrohattan adheres to the principle of completely satisfying the customer by manufacturing the most useful equipment and willing to sell service and spare parts. You have the opportunity to analyze these products online and simply contact us. We would like to thank all of our customers for their interest*

## THE CONTENT

05 Who are we

027 Agricultural machinery

029 Separate pieces



# ABOUT COMPANY

*Our company started from a very long time in the field of agricultural machinery and tools. The company, which has been the initiator of quality in the past and the future, has been producing agricultural products since its establishment.*

It has provided the best service to the consumer by keeping up with technology, building dialogues with farmers and adopting success as a goal. It is necessary to implement and follow the technological development to reach global standards in our century. For this reason, our company has given due importance to the markets both internally and externally, and has absorbed originality in production.



## CULTIVATOR Horizontal Spring Type

### خرباش (محرث) ذو ياي افقي

These are produced with 5, 7, 9, 11, 13, 15 tines. You can use our cultivator for the secondary dressing of soil, preparing seedbed, loosening the soil, breaking the lumps, cutting wild weed, improving the water distribution and preventing the soil from making sole. Cultivator keeps the moisture in soil, so it does not process the soil by overturning and it hoes rows by adjusting the changeable tine distances.



Model	Unit	AGT01-5	AGT01-7	AGT01-9	AGT01-11	AGT01-13	AGT01-15
Number of Tines	pcs	5	7	9	11	13	15
Working Width	cm	125	170	220	270	320	370
Working Depth	cm	25	25	25	25	25	25
Total Height	cm	125	125	125	125	125	125
Weight	kg	224	238	286	362	435	560
Required Power	hp	30-40	40-50	50-65	60-80	75-85	75-85

## CULTIVATOR Vertical Spring Type

### محرث (خرباش) ذو ياي عمودي

You can use our cultivator for the secondary dressing of soil, preparing seedbed, loosening the soil, breaking the lumps, cutting wild weed, improving the water distribution and preventing the soil from making sole. Cultivator keeps the moisture in soil, so it does not process the soil by overturning and it hoes rows by adjusting the changeable tine distances.



Model	Unit	AGT02-7	AGT02-9	AGT02-11	AGT02-13	AGT02-15
Number of Tines	pcs	7	9	11	13	15
Working Width	cm	170	220	270	320	370
Working Depth	cm	30	30	30	30	30
CHASSIS Height	cm	62	62	62	62	62
Weight	kg	265	325	390	470	550
Required Power	hp	40-55	55-65	65-75	70-80	80-90

## CHISEL Heavy Type

### خفال / جيزيل (النوع الثقيل)

The strong intensive chisel is suited for both the first, shallow stubble cultivation across the full surface after combine harvesting and for subsequent, deeper passes with intensive mixing, or for seedbed preparation for mulch seeding. The depth control in the mounted strong model is easily accessible, and the working depth can be adjusted finely between 5 and 30 cm without tools



Model	Unit	AGT03-5	AGT03-7	AGT03-9	AGT03-11	AGT03-13	AGT03-15	AGT03-17
Number Of Tines	cm	5	7	9	11	13	15	17
Working Width	cm	128	191	235	289	341	391	441
Length	cm	110	110	110	120	120	120	120
Total Height	cm	133	133	133	133	133	133	133
Weight	Kg	400	450	560	700	850	1050	1200
Frame Size (Profile)	cm	10 x 10 x 0.8	10 x 10 x 0.8	10 x 10 x 0.8	10 x 10 x 0.8	10 x 10 x 0.8	10 x 10 x 0.8	10 x 10 x 0.8
Min. Hp	Hp	60-70	70-80	80-90	90-100	100-110	110-120	120-130

## RIDGER

### محرث ناري

It provides opening of more than one ridge at one time.

Through to the help of its adjustable mouldboard structure, it provides three different ridges widths.

It is used in irrigation systems and ridge making processes.

It provides a constant working depth with optional depth wheel.



Model	Unit	AGT04-3	AGT04-4
Total Length	cm	290	400
Working Width	cm	220	320
Working Depth	cm	42	42
Total Height	cm	95	95
Total Weight	kg	190	475
Number of Bottoms	pcs	3	4
Distance Between foots	cm	Adjustable	0-95 (Adjustable)
Tire Dimension			7.50x16
Min. Required Power	hp	45-80	65-90

## Disc Plough

### محرث قرص النوع المضلع

Disc Plough was designed to work in various types of land, providing high plowing quality and performance, which can also be used for the construction of contour lines. Mounted Disc Plough has multiple disc adjustments, such as height, swivel and inclination, ensuring the best adjustment for each soil type



Model	Unit	AGT05A-2	AGT05A-3	AGT05A-4	AGT05A-5
Number of Discs	pcs	2	3	4	5
Distance Between Discs	cm	53-55	53-55	53-55	53-55
Disc Diameter	cm	66/ 71	66/ 71	66/ 71	66/ 71
Working Width	cm	60	90	120	150
Max. Working Depth	cm	33	33	33	33
Weight	kg	320	405	530	595
Required Power	hp	40- 50	50- 70	75-90	90-120

## Disc Plough

### محرث قرص النوع الدائري

Disc Plough was designed to work in various types of land, providing high plowing quality and performance, which can also be used for the construction of contour lines. Mounted Disc Plough has multiple disc adjustments, such as height, swivel and inclination, ensuring the best adjustment for each soil type



Model	Unit	AGT05B-2	AGT05B-3	AGT05B-4	AGT05B-5
Number of Discs	pcs	2	3	4	5
Distance Between Discs	cm	53-55	53-55	53-55	53-55
Disc Diameter	cm	66/ 71	66/ 71	66/ 71	66/ 71
Working Width	cm	66	99	132	165
Max. Working Depth	cm	33	33	33	33
Weight	kg	320	415	490	608
Required Power	hp	40- 50	50- 70	75-90	90-120

## V TYPE OFFSET DISC HARROW

### دسك هرو بالشكل V

V type offset globe disc harrows are with hydraulic and trailed type machines which are used to dissect plant residues (corn, sunflower, wheat etc.) and weeds; to break the duff layer; for doubling and triplet in a field left for fallowing after plowing.

It prepares the field directly for planting by harrowless taming without using any other agricultural machine in dry seasons where ploughs can not enter after the harvest and it may be used to tame the soil including intensive humidity as well



Model	Unit	AGT06-16	AGT06-18	AGT06-20	AGT06-22	AGT06-24
Number of Disc	Pcs	16	18	20	22	24
Disc Dimensions (Diameter × Thickness)	cm	56×0.5	56×0.5	56×0.5	56×0.5	56×0.5
Distance Between Discs	cm	22	22	22	22	22
No. of beds on shaft	pcs	4	6	8		
Working width	cm	176	198	220	242	264
Total width	cm	220	243	265	288	309
Total length	cm	166	166	166	166	166
Total height	cm	220	220	220	220	220
Frame size (Profile)	cm	10×10×0.6	10×10×0.6	10×10×0.6	10×10×0.6	10×10×0.6
Disc weight (560 mm)	kg	835	920	1050	1140	1260
Disc weight (610mm)	kg	870	1050	1100	1190	1315
Required power	hp	55-60	60-70	72-80	83-90	95-100

## TRAILED OFFSET DISC HARROW WITH LIFT AND WHEEL CLTD

### دسك هرو مع لساتك وهيدرولييك

Trailed offset disc harrow with lift and wheel are a kind of soil cultivation machine which is used to prepare seed bed by breaking the clods after the pulley and mixing the soil.

Operations such as dissecting the plant residues and weeds and breaking the duff layer may be performed with towed lift wheel offset disc harrows. The most significant superiority from secondary soil cultivation tools is being usable within wide humidity limits of the soil.

Model ÇLTD type offset disc harrows prevents wind and water erosion while ploughing the stubble due to the movement with hydraulic system and having multidirectional movement capacity. It provides the wheel to move on field level by the axle mechanism on the wheel and thereby working depth may be adjusted efficiently



Model	Unit	AGT0-7-16	AGT0-7-18	AGT0-7-20	AGT0-7-22	AGT0-7-24	AGT0-7-26	AGT0-7-28	AGT0-7-30	AGT0-7-32	AGT0-7-34	AGT0-7-36
Number of discs	Pcs	16	18	20	22	24	26	28	30	32	34	36
Disc Dimensions (Diameter x Thickness)	cm	56x0.5	56x0.5	56x0.5	56x0.5	56x0.5	56x0.5	56x0.5	56x0.5	56x0.5	56x0.5	56x0.5
Distance between discs	cm	22	22	22	22	22	22	22	22	22	22	22
No. of beds on shaft	pcs	4	8	8	8	8	8	8	8	8	8	12
Working width	cm	176	198	220	242	264	286	308	330	352	374	396
Total width	cm	200	222	244	266	288	310	332	354	378	398	420
Total length	cm	132	520	520	520	520	527	527	527	562	562	562
Total height	cm	220	125	125	125	125	125	125	125	125	125	125
Required Power	hp	60-65	70-75	75-80	80-85	85-90	90-95	95-100	100-110	110-120	125-130	130-140

## DITCHER ناموسه



Model	Unit	AGT08
Working Width	cm	165-185
Working Depth	cm	50
Total Height	cm	180
Total Width	cm	115
Weight	kg	115
Required Power	hp	50-65

## MOULDBOARD PLOUGH Wedge Type محراث فتح القنوات

It ploughs in stone, rooted and heavy soil conditions. With a wedge made of special alloy steel, it provides long-lasting iron tip saving. Provides stable plough quality with forward wedge iron. Special tempering and stress relieving have been applied to the parts subjected to abrasion. There are model options according to various soil and land conditions. Provides smooth ploughing with depth wheel.



Model	Unit	AGT09-2	AGT09-3	AGT09-4	AGT09-5
Number of blades	pcs	2	3	4	5
Blade size	in	22	22	22	22
Working width	cm	4	6	8	8
Working Depth	cm	176	198	220	242
Weight	cm	200	222	244	266
Required Power	Hp	60-65	70-75	75-80	80-85

## BUND FORMER اله تسويه وبتانه

It is called Bond Ex or Bed Maker. It helps to make dams in flood type irrigation farm and save much labor cost. Simply attach it to your tractor and it will get to work.



Model	Unit	AGT11-1	AGT11-2
Working Width	cm	200	200
Working Depth	cm	45	45
Total Height	cm	110	110
Shovel Height	cm	52	52
Weight	kg	190	210
Required Power	hp	60	60

## LASER CONTROLLED SOIL LEVELLING MACHINE اله تسويه بالليزر



Model	Unit	AGT12-3	AGT12-3.5	AGT12-4	AGT12-4.5	AGT12-5.5	AGT12-6
Blade width	cm	300	350	400	450	550	600
Length (Road Position)	cm	525	525	525	665	605	645
Width (road position)	cm	244.5	244.5	244.5	244.5	244.5	244.5
Wheel operation width	cm	296	346	346	346	449	541
Hydraulic control system		Independent	Independent	Independent	Independent	Independent	Independent
Blade tilt adjustment		Hydraulic	Hydraulic	Hydraulic	Hydraulic	Hydraulic	Hydraulic
Required power	hp	75	90	100	110	125	150

## CULTIVATOR WITH PLANTER خرياش مع زراعه



Model	Unit	AGT13-9	AGT13-11	AGT13-13	AGT13-15
Number of Tines	pcs	9	11	13	15
Working Width	cm	220	270	320	370
Working Depth	cm	25	25	25	25
Total Height	cm	140	140	140	140
Weight	kg	455	515	575	635
Required Power	hp	60-70	65-75	70-80	80-90

## WIDE LEVEL DISC زراعه حبوب بدسك



Model	Unit	AGT14-24	AGT14-30	AGT14-36
Number of units	pcs	24	30	36
Width	cm	650	750	850
Length	cm	370	370	370
Height	cm	124	124	124
Working width	cm	410	512.5	615
Space between units	cm	17.5	17.5	17.5
Seed capacity	Lt	430	530 lt	640 lt
Working speed	km/s	4-8	4-8 km/s	4-8 km/s
Disc diameter	cm	51	51	51
Required power	hp	75-85	85-95 hp	95-100 hp
Weight	kg	1230	1600 kg	1980 kg

## THRESHER MACHINE Air Type Auger Type

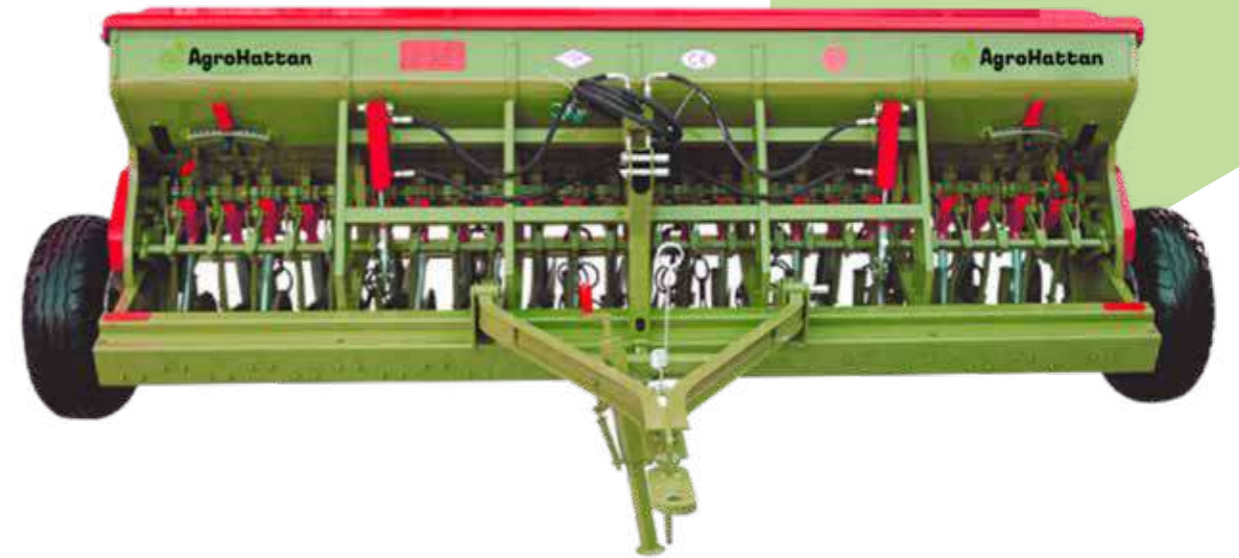
Multi-purpose mobile thresher makes straw from the harvested stem and makes the stem in to straw. With the duty a help and causes a clean grain storage. Grains like wheat, barley, oat etc. And legumes like beans, broad beans, chickpeas and lentils can be chopped by changing of just a few apparatuses. It collects the crops into its hopper if the crops must bagged you will be able to bag them and also because of its own hydraulic lifting system you can deliver crops which are collected in to a hopper to a trailer. The straw is blown to tractor pulled at the back of the Bator type multi-purpose harvester the new type has been designed on the base of working in mobile conditions while it is chopping the product has the ability of delivering the cleaned grain in to its hopper so there is no need for collecting the harvested stem together and work it out stationery it now saves from labor and more important from time.



نوع بالهواء  
نوع بريعه

Model	Unit	AGT18A	AGT18B
Total Length	cm	385	3850
Total Width	cm	200	2000
Total Height	cm	230	2300
Feeding slot width	cm	120	1200
Sieves diameters (According to the crop)	cm	1- 1.2- 1.4- 1.5-	1.6- 1.7- 1.8- 2- 2.2- 2.5
Units of beater Fingers	pcs	44	44
Beater Cycle	rpm	1200	1200
Weight	kg	1550	1550
Working Capacity	kg/hr.	2200	2200
Min. Required Power	hp	35	35
Required P.T.O rpm	rpm	540	540
Bagging System		Auger	Air
Tire Size	inch	600×16	600×16

## COMPINED SEED DRILL زراعة حبوب سطره



Model	Unit	AGT16-16	AGT16-18	AGT16-20	AGT16-22	AGT16-24	AGT16-26	AGT16-28	AGT16-30	AGT16-32
Number of Rows	No	16	18	20	22	24	26	28	30	32
Seeding Distance	cm	14	14	14	14	14	14	14	14	14
Width	cm	302	338	366	394	422	450	478	506	534
Length	cm	132	132	132	132	132	132	132	132	132
Working Width	cm	210	238	266	294	322	350	378	406	435
Total Length	cm	233	233	233	233	233	233	233	233	233
Hopper Height	cm	132	132	132	132	132	132	132	132	132
Seed Box Capacity	lt	350	390	430	470	510	550	590	630	370
Fertilizer Box Capacity	lt	320	360	395	430	465	505	540	580	610
Seed Capacity (wheat)	kg	265	300	325	355	385	415	450	480	510
Fertilizer Capacity	kg	310	350	385	385	455	495	530	565	600
Tire Dimension		7.5×16	7.5×16	7.5×16	7.5×16	7.5×16	7.5×16	7.5×16	7.5×16	7.5×16
Weight		950	1000	1080	1150	1220	1290	1360	1430	1500
Required Power	hp	45-50	50-55	55-60	60-65	65-70	70-75	75-80	80-85	85-90

## INTERROW HOEING MACHINE WITH SPRING TINES



	Unit	AGT17-5	AGT17-7
Number of Units	Pcs	5	7
Number of Tines	Pcs	16	31
Total Length	cm	300	450
Total Width	cm	186	186
Total High	cm	123	123
Distance Between Rows	cm	45-90	45-90
Weight Without Fertilizer Hopper		650	950
Power Requirement	Hp	50	60

Interrow hoeing machine with springs is used for land upheaving and destroying weeds between the plants (beets, beans, sunflower, corn, soy bean, tomato, sweet melon, water melon etc) seeded on the row and provides better fertilizer effecting on soil. Thanks to these processes, plant growing is accelerated.

Row spacing of the hoeing machine can be adjusted. Crop protection discs (star discs) protect the little crops to be covered by soil during hoeing. Thanks to its tine construction, it can also operate on rocky soils easily.

## PNEUMATIC PLANTER (Disc Type)

The Planter D model disc type pneumatic planters for precision seeding of corn, sunflower, sugar-beet, cotton, soya and other crops is the ideal answer to the problems of modern agriculture in which maximum efficiency must be combined with minimum cost.

Telescopic chassis The planters with telescopic chassis have transport width from 3.30 m to 3.50 m depending on row spacing. The 6 and 7 row versions are available with 55 and 60 cm spacing for sunflowers and 70, 75 and 80 cm for maize.



Model	Unit	AGT17A-4	AGT17A-5	AGT17A-6	AGT17A-8
Number of unit	No	4	5	6	8
Total length	cm	200	200	200	200
Total height	cm	160	160	160	160
Total width	cm	300	300	380	600
Distance between rows	cm	25x90	25x90	25x90	25x90
Seed capacity	lt	40x4	40x5	40x6	40x8
Fertilizer case volume	lt	175x2	175x2	175x2	175x4
Fertilizer capacity	Kg	170x2	170x2	170x2	170x4
Operating cycle	rpm	540	540	540	540
Weight without fertilizer hopper	kg	950	1020	1250	1500
Weight with fertilizer hopper	kg	1150	1220	1450	2000
Tire dimensions		500x15	500x15	500x15	500x15
Min. required power	hp	60	70	80	100

## GROUNDNUT THRESHER MACHINE

دراسه - دقاغه - فول

It is really hard to separate the grains from their straws and chaffs. Forget the hassles of separating the grains as you will find the best Multicrop or Groundnut Thresher beside you. This elegant agricultural equipment is designed and fabricated by KSP is ideal for threshing crops such as red gram, soya bean, wheat, maize, green gram, black gram, groundnut thresher, paddy, and other small seed crops easily. The design is made specifically for multipurpose threshing so that the farmers can handle any crop.



Model	Unit	AGT19
Total Length	cm	390
Total Width	cm	190
Total Height	cm	230
Feeding Store	cm	91.5
Units of beater Fingers	pcs	32
Tire Size	In	600x16
Weight	kg	1300
Working Capacity	kg/hr.	1000- 1500
Min. Required Power	hp	35

## DRUM MOWER

جزاة - حشاشه - العشب

It reaps all kinds of feed plants, grass, meadow grass, heath and wild plants bordering the roads with knives rotating at a high annulus velocity and existing in both of the 2 drums rotating reversely to each other and leaves them behind in the form of barrel. With the advantage of adjustable cutting height and the high quality of the cutting height, the nutrient values

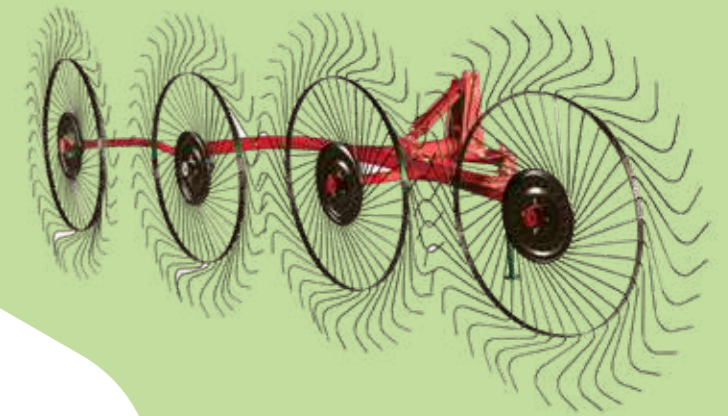


Model	Unit	AGT20-1	AGT20-2	AGT20-3	AGT20-4
Working Width	cm	145	165	195	250
No. of Drum	pcs	2	2	2	4
No. of Knife	pcs	6-8	6-8	6-8	6-8
Cutting Width	cm	125	165	195	250
Transfer of P.T.O	rpm	540	540	540	540
Drum Rotation	rpm	1920	1920	1920	1920
Required Power	hp	25	25	30-35	80
Weight	kg	300	380	420	515
Hydraulic System		None	Optional	Optional	Optional
Sliding System		None	Optional	Optional	Optional

## HAY RAKES

ماكينه جمع الاعشاب

Use this 8 wheel carted hay rake to efficiently move your crop into windrows. The hay rake wheels have adjustments to allow you to position the wheels for proper hay contact.



Model	Unit	AGT21-2	AGT21-3	AGT21-4	AGT21-5	AGT21-8	AGT21-10
Length	cm	200	300	400	500	670	670
Working width	cm	150-175	175-200	250-300	300-350	300-350	520-700
Transport width	cm	140	140	140	230	300	300
Weight	kg	70	125	160	190	590	660
Number of wheel	pcs	2	3	4	5	8	10
Required power	hp	45	45	50	50	55-65	55-70

## SINGLE ROTARY HAY RAKES

ماكينه جمع الاعلاف

THE FARM RAKE IS MADE OF HIGH QUALITY STEEL THAT ENSURES GREAT PERFORMANCE AND DURABILITY



Model	Unit	AGT22
Number of rotor arms	pcs	9-11
Number of springs on arm	pcs	3-4
Working width	cm	330-400
Width (Transport Position)	cm	120-200
Length (Transport Position)	cm	270-290
Number of tires	pcs	2-4
Sizes of wheel		16/6.5-8
Height	cm	125-130
Weight	kg	400-605
Required power	hp	40-55
No. of cycle required from P.T.O	rpm	540

## WATERMELON SEED HARVESTER

### حاصدة بذور البطيخ-بجانه

The watermelon and pumpkin harvester machine can pick up watermelon or pumpkin into hopper automatically , it saves much labor .

The machine crush the watermelon or pumpkin with crusher shaft .



Model	Unit	AGT24
Total Length	cm	410
Total Width	cm	210
Working Principle	With PTO shaft (rpm)	540
Total Height	cm	250
Weight	kg	950
Tire Dimension		600×16
Required Power	hp	50- 80
Working Capacity	kg/hr.	20000 (Pumpkin) / 25000 (Watermelon)

## POTATO HARVESTING MACHINE

### حاصدة بطاطس

Potato harvester is produced with hydraulic lifting lever and universal three point linkage system. This machine runs with PTO shaft and can harvesting as 2-rows. It has a successful mechanism which enables to sieve the potato-tubers in harsh, soft and normal soil conditions and clean the tubers from the soil and put all of them to the sieved soil in an order. It can harvest up to 25 cm depth by means of segmented harvesting blade in harsh and soft soil conditions.



Model	Unit	AGT23-1	AGT23-2	AGT23-4
Number of Rows	No	1	2	4
Height	cm	145	130	135
Length	cm	260	280	315
Width	cm	130	180	320
Weight	kg	435	850	1650
Average Working Speed	km/hr	2	2.5	2.5
Working Width	cm	58	138	280-300
Required Power	hp	45	65	75
Distance Between Rows	cm	-	70-75	40-150

## FERTILIZER SPREADER MACHINE (Single Disc)

### ناثرة سماد -احاديه الدسك

Single-disk fertilizer spreaders, manufactured as a suspended (hydraulic) type, are connected to the tractor by a tree-point suspension system. Spreader machines can be manufactured with hydraulic control device. Thanks to the hydraulic control device, at the beginning of the boundary, from the tractor cabin, the fertilizer spreads easily and quickly



Model	Unit	AGT25-1	AGT25-2	AGT25-3	AGT25-4	AGT25-5	AGT25-6	AGT25-7
Capacity	lt	350	400	500	600	800	1000	1200
Width	cm	110	103	103.2	112	110	111	126
Work Width	cm	1600-	1600-	1600-	1600-	1600-	1600-	1600-
		1800	2000	2000	2000	2000	2000	2000
Height	cm	145	110.8	111.2	119.8	129	146	159
Length	cm	105	114	115	148	165	165	180
Weight	kg	80	130	130	150	180	190	250
Stainless Steel Wing		Optional	Optional	Optional	Optional	Optional	Optional	Optional
Stainless Steel Disc		Optional	Optional	Optional	Optional	Optional	Optional	Optional

## FERTILIZER SPREADER MACHINE (Single Disc)

### ناثرة سماد -احاديه الدسك

Single-disk fertilizer spreaders, manufactured as a suspended (hydraulic) type, are connected to the tractor by a tree-point suspension system. Spreader machines can be manufactured with hydraulic control device. Thanks to the hydraulic control device, at the beginning of the boundary, from the tractor cabin, the fertilizer spreads easily and quickly



Model	Unit	AGT25-1	AGT25-2	AGT25-3	AGT25-4	AGT25-5	AGT25-6	AGT25-7
Capacity	lt	350	400	500	600	800	1000	1200
Width	cm	110	103	103.2	112	110	111	126
Work Width	cm	1600-	1600-	1600-	1600-	1600-	1600-	1600-
		1800	2000	2000	2000	2000	2000	2000
Height	cm	145	110.8	111.2	119.8	129	146	159
Length	cm	105	114	115	148	165	165	180
Weight	kg	80	130	130	150	180	190	250
Stainless Steel Wing		Optional	Optional	Optional	Optional	Optional	Optional	Optional
Stainless Steel Disc		Optional	Optional	Optional	Optional	Optional	Optional	Optional

## LEVELING BLADE

### مجرفة التسوية القصابيه



Levelling Blades are mounted to tractors by three point linkage system. These Levelling Blades can be used in various purposes like making a field way, land levelling, opening ditches and filling. By the help of their 360° working angle they can be used in different directions. Blades are produced from special steel to prevent corrosion and breakings. Also both sides of these removable blades can be used.

Model	Unit	AGT10-1	AGT10-2	AGT10-3
Working width	cm	200	220	240
Weight	kg	250	266	279
Required power	hp	35-50	40-50	45-60

## POTATOES PLANTER

### زراعة بطاطس

We are the first and only manufacturer of fully automatic potato planting machine in Turkey and we own the patent rights. The boiler capacity is 1000 kg of seeds. It sows 5-7 hectares per day.



Model	Unit	AGT15-2	AGT15-4
Number of Rows	No	2	4
Height	cm	180	180
Length	cm	180	180
Width	cm	200	340
Weight	kg	520	1020
Average Working Speed	km/hr	4	4
Distance Between Rows	cm	70-75	70-75
Planting Distance	cm	15-45	15-45
Average Tank Capacity	kg	420	850
Required Power	hp	50	90

## FERTILIZER SPREADER MACHINE (Double Disc)

### ناثرة سماد-ثنائية الدسك

Single-disk fertilizer spreaders, manufactured as a suspended (hydraulic) type, are connected to the tractor by a tree-point suspension system. Spreader machines can be manufactured with hydraulic control device. Thanks to the hydraulic control device, at the beginning of the border, from the tractor cabin



Model	Unit	AGT26-8	AGT26-10	AGT26-12	AGT26-15	AGT26-20
Capacity	lt	800	1000	1200	1500	2500
Width	cm	115	115	130	130	130
Working Width	cm	2000-3600	2000-3600	2000-3600	2000-3600	2400-3600
Height	cm	112	123	136	150	233
Length	cm	170	170	220	220	220
Weight	kg	235	255	390	410	780
Stainless Steel Wing		Optional	Optional	Optional	Optional	Optional
Stainless Steel Disc		Optional	Optional	Optional	Optional	Optional

## SPRAYING MACHINE (MOUNTED TYPE)

### رشاش مبيد (النوع المحمول خلف الجرار)

Cross column developed to meet the different requirements of plant protection treatments. Sprayers are very versatile and suitable, depending on the applications, for working in open field agriculture, spraying and distributing herbicides between plant rows. Individual users in specific treatments. Can be installed easily



Model	Unit	AGT27-400	AGT27-500	AGT27-600	AGT27-800	AGT27-1000
Tank capacity	lt	400	500	600	800	1000
Boom length	cm	800	1000	1000	1200	1200
Pump flow	lt/min	80	80	80	80	105
Pump pressure	bar	40	40	40	40	40
No. of nozzle	pcs	20	20	20	20	24
Working Cycle		540	540	540	540	540

Model	Unit	AGT29-10	AGT29-16	AGT29-20
Tank volume	lt	10	16	20
Covering area (1 lt)	cm <sup>2</sup>	80 000	80 000	80 000
Weight	kg	1.8	2.87	4.5
Distance of Throwing	cm	1000	1200	1200

## spraying machines (Back Type)

رشاش مبيد-محمول على الظهر

Our company has achieved widespread recognition in offering Knapsack Sprayer Machine to the clients.



## SPRAYING MACHINE (TRAILED TYPE)

رشاش مبيد - النوع المجرور بلساتك

via shaft developed to meet the different requirements of plant protection treatments. Sprayers extremely versatile and suitable, according to the applications, to operate in open-field cultivations, sprayer and distribute herbicides among the plant rows the availability of several mechanical and hydraulic spraying



Model	Unit	AGT28-1000	AGT28-2000	AGT28-2000-1	AGT28-3000
Tank capacity	lt	1000	2000	2000	3000
Boom length	cm	1200	1200	1600	1600-1800
Pump flow	lt/min	97	97	97	145
Pump pressure	bar	45	45	50	50
No. of nozzle	pcs	24	24	33	33-36
Height adjust.		Manual	Manual	hydraulic	Hydraulic
Working Cycle	rpm	540	540	540	540

## AGRICULTURAL TRAILER

مقطورات بمحورين ومحورين

agricultural trailer with three-sided discharge – in the rear and on both sides. The walls can be opened separately or together, at the top or bottom. The trailer is designed for transportation of grains and any other bulk materials. Rear discharge allows stream discharge of bulk materials.



Model	Unit	AGT30-3	AGT30-5	AGT30-4	AGT30-6	AGT30-8	AGT30-10
Axle No.	pcs	Single Axle			Double Axle		
Hydraulic lifting		Available	1200		Available		
Capacity	kg	3500	5000	4000	6000	8000	10000
Length	cm	300	320	400	430	430	430
Width	cm	185	200	200	200	220	220
Height	cm	150	170	175	220	230	230
Side height	cm	50	50	50	50	60	70
Addition height	cm	25	25	25	25	25+25	25+25



# EL-ESHRAQ TRACTOR

## Technical Specification

ENGINE	2 WD	4 WD
TRADE MARK / TYPE	M 248	M 248
CYLINDER VOLUME / NO	4.0 LITERS / 4	4.0 LITERS / 4
INJECTION TYPE	DIRECT INJECTION	DIRECT INJECTION
COMPRESSION RATIO	16.01	16.01
CYLINDER DIA / STROKE	101x127 MM	101x127 MM
COOLING	WATER COOLED	WATER COOLED
ASPIRATION	NATURAL	NATURAL
AIR FILTER	DRY TYPE / DOUBLE ELEMENT	DRY TYPE / DOUBLE ELEMENT
EXHAUST	VERTICAL	VERTICAL
MAX POWER	78 HP / 2250 RPM	80 HP / 2250 RPM
MIN POWER	278N / 1200 RPM	178N / 1200 RPM
ENGINE OIL	9LT	9LT

CLUTCH	2 WD	4 WD
TYPE	DOUBLE DISC DRY TYPE DUAL CLUTCH	DOUBLE DISC DRY TYPE DUAL CLUTCH
CLUTCH DISC DIA	254-305 MM (10-12 IN)	254-305 MM (10-12 IN)

POWER TAKE-OFF (PTO)	2 WD	4 WD
TYPE	LIVE PTO STANDARD	LIVE PTO STANDARD
	DRIVE BY ENGINE	DRIVE BY ENGINE
	SINGLE SPEED	SINGLE SPEED
RPM	AT 1685 ENGINE RPM 540 RPM	AT 1685 ENGINE RPM 540 RPM
DIAMETER	85 MM (3.38 IN)	85 MM (3.38 IN)
NUMBER OF SPLINES	6	6
MAXIMUM POWER	78 HP	80 HP
POWER (540 RPM)	68 SHP	68 SHP

STEERING WHEEL	2 WD	4 WD
TYPE	MECHANICAL OR HYDRAULIC	MECHANICAL OR HYDRAULIC

REAR AXLE & BRAKES	2 WD	4 WD
TYPE	OIL BATHED BRONZE DISC	OIL BATHED BRONZE DISC
CONTROL	MECHANICAL	MECHANICAL
NUMBER OF DISC	5 (ON EACH SIDE)	5 (ON EACH SIDE)
PARKING BRAKE	WITH HAND LEVER	WITH HAND LEVER
DIFFERENTIAL LOCK	MECHANICAL	MECHANICAL

WHEELS AND TIRES	2 WD	4 WD
FRONT WHEELS	5.50 x 16	10x24
FRONT TIRES	7.50 x 16	12.24 or 11x24
REAR WHEEL	12.30 OR 14.30	14.30
REAR TIRES	13.6 / 12x18 - 18.4 / 15x30	18.4 / 15x30

CAPACITIES	2 WD	4 WD
FUEL TANK	78LT	78LT
ENGINE SUMP	9LT	9LT
COOLING SYSTEM	14LT	14LT
HYDRAULIC SYSTEM	38LT	38LT
STEERING BOX OR PUMP	1.9LT	1.9LT

REAR WEIGHT	2 WD	4 WD
REAR WEIGHT	ON EACH WHEEL	ON EACH WHEEL

HYDRAULIC SYSTEM	2 WD	4 WD
FUNCTION	COLUMN HEIGHT, POSITION CONTROL	COLUMN HEIGHT, POSITION CONTROL
	SENSITIVITY CONTROL	SENSITIVITY CONTROL
MAXIMUM PUMP FLOW RATE	17-22 LT / MIN	17-22 LT / MIN
MAXIMUM PUMP PRESSURE	210 BARS	210 BARS
MAXIMUM LIFTING CAPACITY	2600 KG	2600 KG
LOWER LINK	FLEXIBLE BALL JOINT ACCORDING TO CATEGORY I OR II	FLEXIBLE BALL JOINT ACCORDING TO CATEGORY I OR II
MIDDLE ROD	ADJUSTABLE, SCREW TYPE	ADJUSTABLE, SCREW TYPE

GEAR BOX & ROAD SPEED	2 WD		4 WD	
	8 FORWARD 2 REVERSE WITH 18.4/15x30 TIRE AT 2000 ENGINE RPM	8 FORWARD 2 REVERSE WITH 18.4/15x30 REAL TIRE AT 2000 ENGINE RPM	8 FORWARD 2 REVERSE WITH 18.4/15x30 TIRE AT 2000 ENGINE RPM	8 FORWARD 2 REVERSE WITH 18.4/15x30 REAL TIRE AT 2000 ENGINE RPM
FORWARD	GEAR	1st - 1.1	GEAR	1st - 1.1
		2nd - 2.2		2nd - 2.2
		3rd - 3.3		3rd - 3.3
		4th - 4.4		4th - 4.4
		5th - 7.5		5th - 7.5
		6th - 11.2		6th - 11.2
		7th - 18		7th - 18
		8th - 24.2		8th - 24.2

REVERSE	2 WD		4 WD	
	GEAR	1st / 2nd	GEAR	1st / 2nd
	1	3	1	3
	2	12.2	2	12.2

ELECTRICS	2 WD	4 WD
VOLTAGE	12 V NEGATIVE CHASSIS	12 V NEGATIVE CHASSIS
BATTERY	105 AMPERES / HOUR	105 AMPERES / HOUR
ALTERNATOR	55 AMPERES	55 AMPERES
STARTER	1.8 KW	1.8 KW
LIGHTS	DRIVING PARKING, BRAKE LIGHT	DRIVING PARKING, BRAKE LIGHT
	TURN SIGNAL REAR PLOUGH LIGHT	TURN SIGNAL REAR PLOUGH LIGHT
	FOUR-WAY FLASHER	FOUR-WAY FLASHER
OTHER	HORN 5 PIN TRAILER POWER OUTLET	HORN 5 PIN TRAILER POWER OUTLET

INSTRUMENT PANEL	2 WD	4 WD
TYPE	MONOBLOCK (SINGLE BLOCK)	MONOBLOCK (SINGLE BLOCK)
INDICATORS	TRATORMETER / FUEL AND ENGINE	TRATORMETER / FUEL AND ENGINE
	TEMPERATURE	TEMPERATURE
	ANALOGUE ELECTRONICALLY TRANSMITTED	ANALOGUE ELECTRONICALLY TRANSMITTED
WARNING LIGHTS	TURN SIGNALS	TURN SIGNALS
	BATTERY CHARGE	BATTERY CHARGE
	ENGINE OIL PRESSURE	ENGINE OIL PRESSURE
	HIGH BEAM	HIGH BEAM
	FOUR-WAY FLASHER	FOUR-WAY FLASHER
	PTO	PTO
	HAND BRAKE	HAND BRAKE
AIR FILTER SWITCH	AIR FILTER SWITCH	

TRACTOR WEIGHT	2 WD	4 WD
REAL AXLE WEIGHT	WITH FUEL, OIL AND WATER	WITH FUEL, OIL AND WATER
TRACTOR WEIGHT	2300 (+) KG	3000 (+) KG

STANDARD ACCESSORIES
SWINGING TOWING ROD
EXTERNAL HYDRAULIC CONTROL VALVE AND HOSE
(FOR TRACTORS WITHOUT PTO)
TOOLBOX
EXTERNAL TELESCOPIC STRETCHER
BEACON (WARNING) LAMP
HYDRAULIC LOCK VALVE

OPTIONAL
FRONT GRILL ROUND TYPE
ROPS
CANOPY
PLATFORM
SPOOL VALVE

DIMENSIONS	2 WD	4 WD
OVERALL HEIGHT (EXHAUST)	2550 MM	2550 MM
OVERALL HEIGHT (STEERING)	1800 MM	1800 MM
OVERBALL WIDTH (MIN)	1870 MM	1870 MM
OVERALL LENGTH	3700 MM	3700 MM



**Shaft**  
عمود شاقط



**Trigger Spray Gun**  
مسدس رشاش



**Nozzle**  
فونيه



**Filter**  
فلتر رشاش



**Regulator**  
منظم رشاش



**Spraying Machine Pump**  
مضخه رشاش



**Chisel Leg**  
رجل الخفال



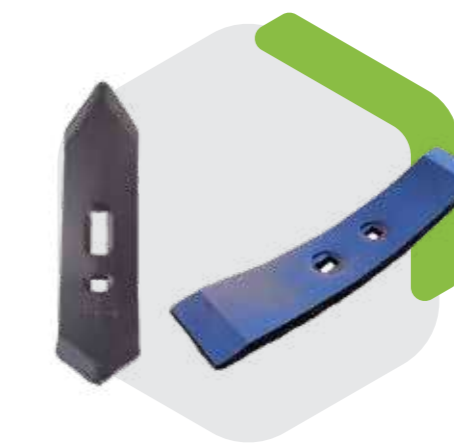
**Cultivator Leg**  
رجل الخرياش



**Cultivator Spring**  
ياي خرياش



**Rotavator Knife**  
سلاح طاحنه ال تبه



**Chisel Knife**  
سلاح خفال



**Cultivator Knife**  
سلاح خرياش